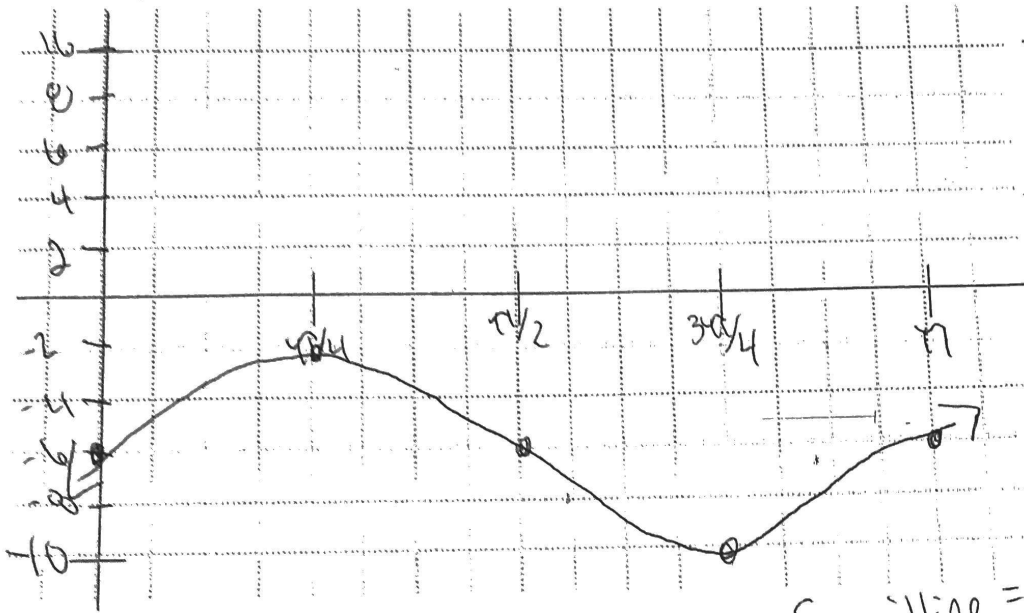


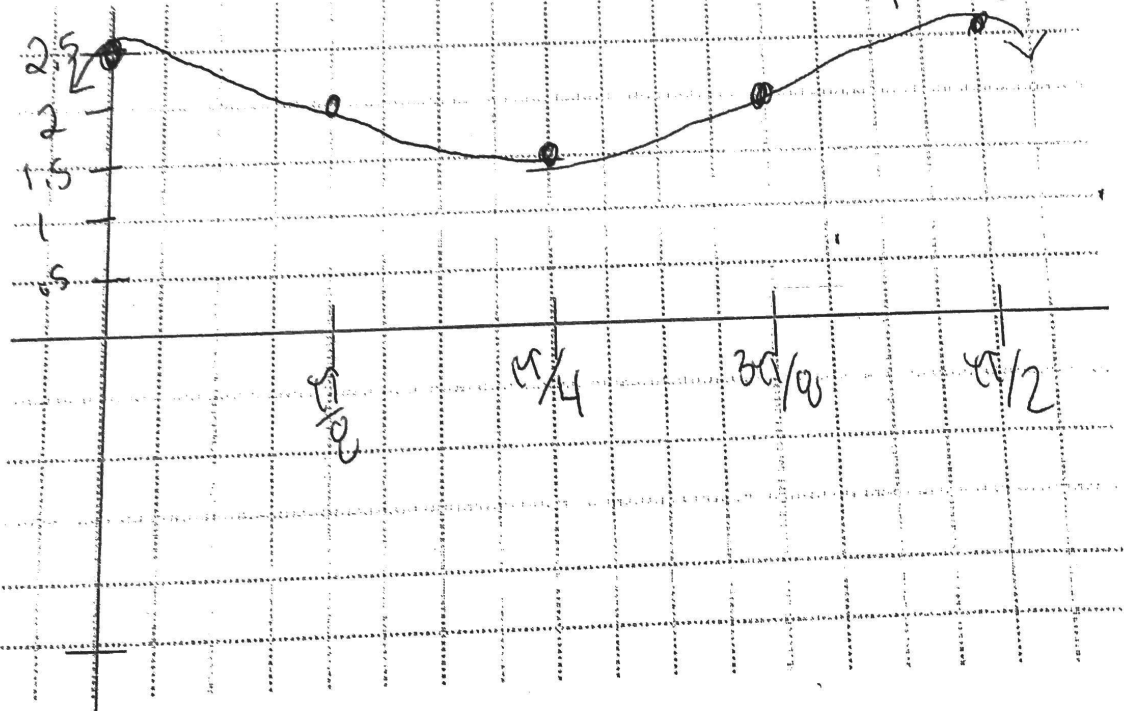
$a=4$  midline  $= -6$   $b=2$   $p = \frac{2\pi}{b} = \frac{2\pi}{2} = \frac{\pi}{1} = \pi$   
 $y = 4\sin(2x) - 6$



X	Y
0	-6
$\frac{\pi}{4}$	-2
$\frac{\pi}{2}$	-6
$\frac{3\pi}{4}$	-10
$\pi$	-6

Annotations: midline at -6, -6+4 = -2, midline at -6, -6-4 = -10.

$y = .5\cos(4x) + 2$   $a=.5$  midline  $= 2$   
 $p = \frac{2\pi}{4} = \frac{\pi}{2}$



X	Y
0	2.5
$\frac{\pi}{4}$	2
$\frac{\pi}{2}$	1.5
$\frac{3\pi}{4}$	2
$\pi$	2.5