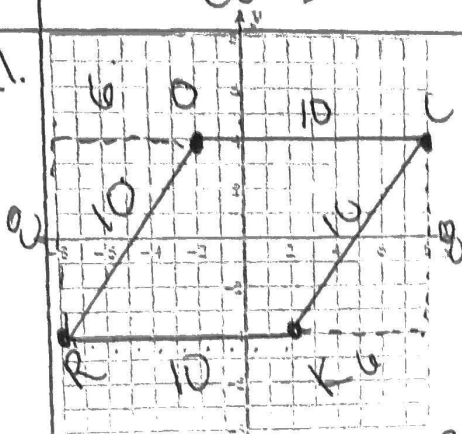


LTG6ea

How do I find area & perimeter on the coordinate plane?

ex1.



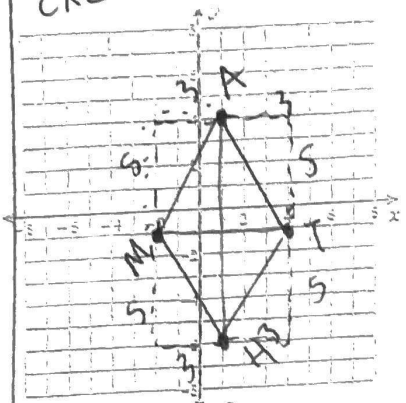
- R(-8, -4)
- O(-2, 4)
- C(8, 4)
- K(2, -4)

$P = 4(10) = \boxed{40 \text{ units}}$ ^{2/8}

$A = bh$
 $A = 10 \cdot 8 = \boxed{80 \text{ units}^2}$

rhombus $6^2 + 8^2 = c^2$
 $\sqrt{100} = \sqrt{c^2}$
 $10 = c$

ex2:



- M(-2, -1)
- A(1, 4)
- T(4, -1)
- H(1, -1)

$P = 4(5.83) \approx \boxed{23.32 \text{ units}}$

$A = \frac{10 \cdot 6}{2} = \frac{60}{2} = \boxed{30 \text{ units}^2}$

$5^2 + 3^2 = c^2$
 $\sqrt{34} = \sqrt{c^2}$
 $5.83 \approx c$

